



Certificate of Analysis

QA SAMPLE - INFORMATIONAL ONLY

1 of 3

ICAL ID: 20230210-022
Sample: CA230209-031-055
ITM001668 - cbdMD-TIN-NF-3000-FS
Strain: ITM001668 - cbdMD-TIN-NF-3000-FS
Category: Ingestible
Type: Tincture

cbdMD
Lic. #
10130 Perimeter Pkwy
Charlotte, NC 28216
Lic. #

Batch#: 30271T3.1
Batch Size Collected:
Total Batch Size:
Collected: 02/14/2023; Received: 02/14/2023
Completed: 02/14/2023

Moisture NT Water Activity NT	Δ9-THC 79.57 mg/unit	CBD 3,388.06 mg/unit	Total Cannabinoids 3,604.73 mg/unit	Total Terpenes NT
--	--------------------------------	--------------------------------	---	----------------------

Summary	SOP Used	Date Tested	
Batch			Pass
Cannabinoids	POT-PREP-004 High	02/13/2023	Complete
Residual Solvents	RS-PREP-001	02/13/2023	Pass
Microbials	MICRO-PREP-001	02/13/2023	Pass
Mycotoxins	PESTMYCO-LC-PREP-001	02/13/2023	Pass
Heavy Metals	HM-PREP-001	02/13/2023	Pass
Pesticides	PESTMYCO-LC-PREP-001/ PEST-GC-PREP-001	02/13/2023	Pass



Scan to see results

Cannabinoid Profile

1 Unit = bottle, 29.16 g. 1 mL = 0.96 g.

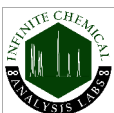
Analyte	LOQ (mg/g)	LOD (mg/g)	%	mg/g	mg/mL	mg/unit	Analyte	LOQ (mg/g)	LOD (mg/g)	%	mg/g	mg/mL	mg/unit
THCa	0.1841	0.0614	ND	ND	ND	ND	CBGa	0.2669	0.0890	ND	ND	ND	ND
Δ9-THC	0.0794	0.0265	0.273	2.73	2.62	79.57	CBG	0.0915	0.0305	0.063	0.63	0.61	18.43
Δ8-THC	0.0824	0.0275	ND	ND	ND	ND	CBN	0.1112	0.0371	0.030	0.30	0.29	8.84
THCV	0.0714	0.0238	ND	ND	ND	ND	Total THC			0.27	2.73	2.62	79.57
CBDa	0.0880	0.0293	ND	ND	ND	ND	Total CBD			11.62	116.19	111.54	3388.06
CBD	0.0755	0.0252	11.619	116.19	111.54	3388.06	Total			12.36	123.62	118.67	3604.73
CBDV	0.0741	0.0247	0.096	0.96	0.92	27.94							
CBC	0.2221	0.0740	0.281	2.81	2.70	81.90							

Total THC=THCa * 0.877 + Δ9-THC; Total CBD = CBDa * 0.877 + CBD. LOD= Limit of Detection, LOQ= Limit of Quantitation, ND= Not Detected, NR= Not Reported. Potency is reported on a dry weight basis. Instrumentation and analysis SOPs used: Cannabinoids:UHPLC-DAD(POT-INST-005),Moisture:Moisture Analyzer(MOISTURE-001),Water Activity:Water Activity Meter(WA-INST-002), Foreign Material:Microscope(FOREIGN-001). Density measured at 19-24 °C, Water Activity measured at 0-90% RH. All QA submitted by the client, All CA State Compliance sampled using SAMPL-SOP-001.

Terpene Profile

Analyte	LOQ (mg/g)	LOD (mg/g)	%	mg/g	Analyte	LOQ (mg/g)	LOD (mg/g)	%	mg/g
---------	------------	------------	---	------	---------	------------	------------	---	------

NR= Not Reported (no analysis was performed), ND= Not Detected (the concentration is less than the Limit of Detection (LOD)). Analytical instrumentation used: HS-GC-MS; samples analyzed according to SOP TERP-INST-003.



Infinite Chemical Analysis Labs
8312 Miramar Mall
San Diego, CA
(858) 623-2740
www.infiniteCAL.com
Lic# C8-0000047-LIC

Josh M Swider

Josh Swider
Lab Director, Managing Partner
02/14/2023

Confident Cannabis
All Rights Reserved
support@confidentcannabis.com
(866) 506-5866
www.confidentcannabis.com



This product has been tested by Infinite Chemical Analysis, LLC using valid testing methodologies and a quality system as required by state law. All LQC samples were performed and met the prescribed acceptance criteria in 16 CCR section 15730, pursuant to 16 CCR section 15726(e)(13). Values reported relate only to the product tested. Infinite Chemical Analysis, LLC makes no claims as to the efficacy, safety or other risks associated with any detected or non-detected levels of any compounds reported herein. This Certificate shall not be reproduced except in full, without the written approval of Infinite Chemical Analysis, LLC.



Certificate of Analysis

QA SAMPLE - INFORMATIONAL ONLY

2 of 3

ICAL ID: 20230210-022
Sample: CA230209-031-055
ITM001668 - cbdMD-TIN-NF-3000-FS
Strain: ITM001668 - cbdMD-TIN-NF-3000-FS
Category: Ingestible
Type: Tincture

CBDMD
Lic. #
10130 Perimeter Pkwy
Charlotte, NC 28216
Lic. #

Batch#: 30271T3.1
Batch Size Collected:
Total Batch Size:
Collected: 02/14/2023; Received: 02/14/2023
Completed: 02/14/2023

Residual Solvent Analysis

Category 1	LOQ	LOD	Limit	Status	Category 2	LOQ	LOD	Limit	Status		
1,2-Dichloro-Ethane	ND	0.31	0.1032	1	Pass	Acetone	ND	51.246	2.572	5000	Pass
Benzene	ND	0.088	0.023	1	Pass	Acetonitrile	ND	0.798	0.266	410	Pass
Chloroform	ND	0.174	0.058	1	Pass	Butane	ND	4.849	1.114	5000	Pass
Ethylene Oxide	ND	0.757	0.252	1	Pass	Ethanol	ND	40.542	13.513	5000	Pass
Methylene-Chloride	ND	0.729	0.148	1	Pass	Ethyl-Acetate	ND	2.288	0.436	5000	Pass
Trichloroethene	ND	0.19	0.063	1	Pass	Ethyl-Ether	ND	2.869	0.593	5000	Pass
						Heptane	ND	6.548	2.183	5000	Pass
						n-Hexane	ND	0.931	0.31	290	Pass
						Isopropanol	283.0	5.037	1.679	5000	Pass
						Methanol	ND	4.665	1.555	3000	Pass
						Pentane	ND	17.255	5.752	5000	Pass
						Propane	ND	26.11	8.703	5000	Pass
						Toluene	ND	0.864	0.136	890	Pass
						Xylenes	ND	0.857	0.241	2170	Pass

NR= Not Reported (no analysis was performed), ND= Not Detected (the concentration is less than the Limit of Detection (LOD)). Analytical instrumentation used: HS-GC-MS; samples analyzed according to SOP RS-INST-003.

Heavy Metal Screening

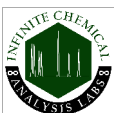
	LOQ	LOD	Limit	Status	
Arsenic	ND	0.009	0.003	1.5	Pass
Cadmium	ND	0.002	0.001	0.5	Pass
Lead	ND	0.004	0.001	0.5	Pass
Mercury	ND	0.014	0.005	3	Pass

NR= Not Reported (no analysis was performed), ND= Not Detected (the concentration is less than the Limit of Detection (LOD)). Analytical instrumentation used: ICP-MS; samples analyzed according to SOP HM-INST-003.

Microbiological Screening

	Limit	Result	Status
Aspergillus flavus	CFU/g	NR	NT
Aspergillus fumigatus		NR	NT
Aspergillus niger		NR	NT
Aspergillus terreus		NR	NT
STEC		Not Detected	Pass
Salmonella SPP		Not Detected	Pass

ND=Not Detected. Analytical instrumentation used:qPCR; samples analyzed according to SOP MICRO-INST-001.



Infinite Chemical Analysis Labs
8312 Miramar Mall
San Diego, CA
(858) 623-2740
www.infiniteCAL.com
Lic# C8-0000047-LIC

Josh M Swider

Josh Swider
Lab Director, Managing Partner
02/14/2023

Confident Cannabis
All Rights Reserved
support@confidentcannabis.com
(866) 506-5866
www.confidentcannabis.com



This product has been tested by Infinite Chemical Analysis, LLC using valid testing methodologies and a quality system as required by state law. All LQC samples were performed and met the prescribed acceptance criteria in 16 CCR section 15730, pursuant to 16 CCR section 15726(e)(13). Values reported relate only to the product tested. Infinite Chemical Analysis, LLC makes no claims as to the efficacy, safety or other risks associated with any detected or non-detected levels of any compounds reported herein. This Certificate shall not be reproduced except in full, without the written approval of Infinite Chemical Analysis, LLC.



Certificate of Analysis

QA SAMPLE - INFORMATIONAL ONLY

3 of 3

ICAL ID: 20230210-022
Sample: CA230209-031-055
ITM001668 - cbdMD-TIN-NF-3000-FS
Strain: ITM001668 - cbdMD-TIN-NF-3000-FS
Category: Ingestible
Type: Tincture

CBDMD
Lic. #
10130 Perimeter Pkwy
Charlotte, NC 28216
Lic. #

Batch#: 30271T3.1
Batch Size Collected:
Total Batch Size:
Collected: 02/14/2023; Received: 02/14/2023
Completed: 02/14/2023

Chemical Residue Screening

Category 1	LOQ	LOD	Status	Mycotoxins	LOQ	LOD	Limit	Status		
	µg/g	µg/g	µg/g		µg/kg	µg/kg	µg/kg	µg/kg		
Aldicarb	ND	0.030	0.009	Pass	B1	ND	6.2	2.05	Tested	
Carbofuran	ND	0.030	0.002	Pass	B2	ND	5	1.63	Tested	
Chlordane	ND	0.075	0.025	Pass	G1	ND	5.38	1.77	Tested	
Chlorfenapyr	ND	0.075	0.025	Pass	G2	ND	5	1.02	Tested	
Chlorpyrifos	ND	0.030	0.008	Pass	Ochratoxin A	ND	16.41	5.42	20	Pass
Coumaphos	ND	0.030	0.005	Pass	Total Aflatoxins	ND		20	Pass	
Daminozide	ND	0.033	0.011	Pass						
Dichlorvos	ND	0.030	0.007	Pass						
Dimethoate	ND	0.030	0.007	Pass						
Ethoprophos	ND	0.030	0.004	Pass						
Etofenprox	ND	0.030	0.006	Pass						
Fenoxycarb	ND	0.030	0.006	Pass						
Fipronil	ND	0.030	0.008	Pass						
Imazalil	ND	0.030	0.009	Pass						
Methiocarb	ND	0.030	0.005	Pass						
Mevinphos	ND	0.032	0.011	Pass						
Paclbutrazol	ND	0.030	0.006	Pass						
Parathion Methyl	ND	0.024	0.008	Pass						
Propoxur	ND	0.030	0.005	Pass						
Spiroxamine	ND	0.030	0.003	Pass						
Thiacloprid	ND	0.030	0.002	Pass						

Category 2	LOQ	LOD	Limit	Status	Category 2	LOQ	LOD	Limit	Status		
	µg/g	µg/g	µg/g	µg/g		µg/g	µg/g	µg/g	µg/g		
Abamectin	ND	0.039	0.013	0.3	Pass	Kresoxim Methyl	ND	0.030	0.007	1	Pass
Acephate	ND	0.063	0.021	5	Pass	Malathion	ND	0.030	0.005	5	Pass
Acequinocyl	ND	0.035	0.011	4	Pass	Metalaxyl	ND	0.030	0.003	15	Pass
Acetamiprid	ND	0.030	0.006	5	Pass	Methomyl	ND	0.030	0.006	0.1	Pass
Azoxystrobin	ND	0.030	0.003	40	Pass	Myclobutanil	ND	0.030	0.007	9	Pass
Bifenazate	ND	0.030	0.005	5	Pass	Naled	ND	0.030	0.005	0.5	Pass
Bifenthrin	ND	0.030	0.006	0.5	Pass	Oxamyl	ND	0.030	0.009	0.3	Pass
Boscalid	ND	0.030	0.007	10	Pass	Pentachloronitrobenzene	ND	0.054	0.018	0.2	Pass
Captan	ND	0.358	0.120	5	Pass	Permethrin	ND	0.030	0.002	20	Pass
Carbaryl	ND	0.030	0.004	0.5	Pass	Phosmet	ND	0.030	0.005	0.2	Pass
Chlorantraniliprole	ND	0.030	0.006	40	Pass	Piperonyl Butoxide	ND	0.030	0.006	8	Pass
Clofentezine	ND	0.030	0.005	0.5	Pass	Prallethrin	ND	0.055	0.018	0.4	Pass
Cyfluthrin	ND	0.056	0.019	1	Pass	Propiconazole	ND	0.037	0.012	20	Pass
Cypermethrin	ND	0.044	0.015	1	Pass	Pyrethrins	ND	0.030	0.002	1	Pass
Diazinon	ND	0.030	0.009	0.2	Pass	Pyridaben	ND	0.030	0.005	3	Pass
Dimethomorph	ND	0.030	0.009	20	Pass	Spinetoram	ND	0.030	0.003	3	Pass
Etoxazole	ND	0.030	0.003	1.5	Pass	Spinosad	ND	0.030	0.003	3	Pass
Fenhexamid	ND	0.030	0.008	10	Pass	Spiromesifen	ND	0.030	0.005	12	Pass
Fenpyroximate	ND	0.030	0.005	2	Pass	Spirotetramat	ND	0.030	0.006	13	Pass
Flonicamid	ND	0.046	0.015	2	Pass	Tebuconazole	ND	0.030	0.009	2	Pass
Fludioxonil	ND	0.048	0.016	30	Pass	Thiamethoxam	ND	0.030	0.006	4.5	Pass
Hexythiazox	ND	0.031	0.010	2	Pass	Trifloxystrobin	ND	0.030	0.002	30	Pass
Imidacloprid	ND	0.030	0.009	3	Pass						

Other Analyte(s):

NR= Not Reported (no analysis was performed), ND= Not Detected (the concentration is less than the Limit of Detection (LOD)). Analytical instrumentation used: LC-MS-MS & GC-MS-MS; samples analyzed according to SOPs PESTMYCO-LC-INST-004 and PEST-GC-INST-003.



Infinite Chemical Analysis Labs
8312 Miramar Mall
San Diego, CA
(858) 623-2740
www.infiniteCAL.com
Lic# C8-000047-LIC

Josh M Swider

Josh Swider
Lab Director, Managing Partner
02/14/2023

Confident Cannabis
All Rights Reserved
support@confidentcannabis.com
(866) 506-5866
www.confidentcannabis.com



This product has been tested by Infinite Chemical Analysis, LLC using valid testing methodologies and a quality system as required by state law. All LQC samples were performed and met the prescribed acceptance criteria in 16 CCR section 15730, pursuant to 16 CCR section 15726(e)(13). Values reported relate only to the product tested. Infinite Chemical Analysis, LLC makes no claims as to the efficacy, safety or other risks associated with any detected or non-detected levels of any compounds reported herein. This Certificate shall not be reproduced except in full, without the written approval of Infinite Chemical Analysis, LLC.

Certificate of Analysis



Sample Name	ITM001668 - cbdMD-TIN-NF-3000-FS	ICAL ID	20230210-022
Batch	30271T3.1	Registering Laboratory	San Diego
Client	CBDMD	Contact	Customer Service Team
Address		Address	8312 Miramar Mall San Diego, CA 92121
Telephone		Telephone	(858) 623-2740
Email		Email	questions@infinitecal.com
Sampler		COA Issue Date	February 16, 2023

This report supersedes any previous revision with this reference. This document must not be reproduced, except in full. If samples were provided by the customer, results apply only to the samples 'as received' and responsibility for representative sampling rests with the customer. Water results are reported on an 'as is' basis. Infinite Chemical Analysis Labs, LLC makes no claims pertaining to the efficacy, safety, or other risks associated with any detected or non-detected levels of any compounds reported herein.

Definitions

| <: Less Than | >: Greater Than | RP: Result Pending | MPN: Most Probable Number | CFU: Colony Forming Units | ---: Not Requested | NA: Not Applicable | ND: Not Detected | MDL: Method Detection Limit | LCMRL: Lowest Concentration Minimum Reporting Level | NT: Not Tested | ~: Estimated | TBA: To Be Advised | TNTC: Too numerous to count

Microbial Plate Panel

Analyte	CFU/g	MDL	Client Limit ¹	Status ²
Aerobic (APC)	<MDL	10	---	---
Coliforms	NT	10	---	---
<i>E. coli</i>	NT	10	---	---
Yeast & Mold	<MDL	10	---	---
<i>Enterobacteriaceae</i>	NT	10	---	---
<i>Salmonella spp.</i>	NT	10	---	---
<i>Listeria spp.</i>	<MDL	10	---	---

Analysis Location

All analyses were completed by Infinite Chemical Analysis – San Diego.

Analysis Comments

Method ID: MICRO-PLATE-001

¹Client limit is self-selected and will be replaced by official CA state limits when they become available.

²Status of Pass/Fail based on client limit selected.

Josh M Swider

Josh Swider
Lab Director, CEO
February 16, 2023